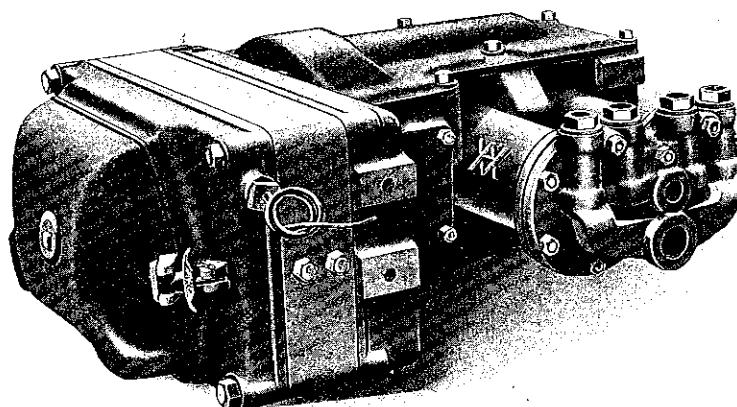


COPYRIGHT, 1916, BY THE

Westinghouse Traction Brake Company.



Form 49.

THE MUNICIPAL

Date Received

Section

Contents *Wet*

Refer Letter

Agent *W*

Address

wo52636

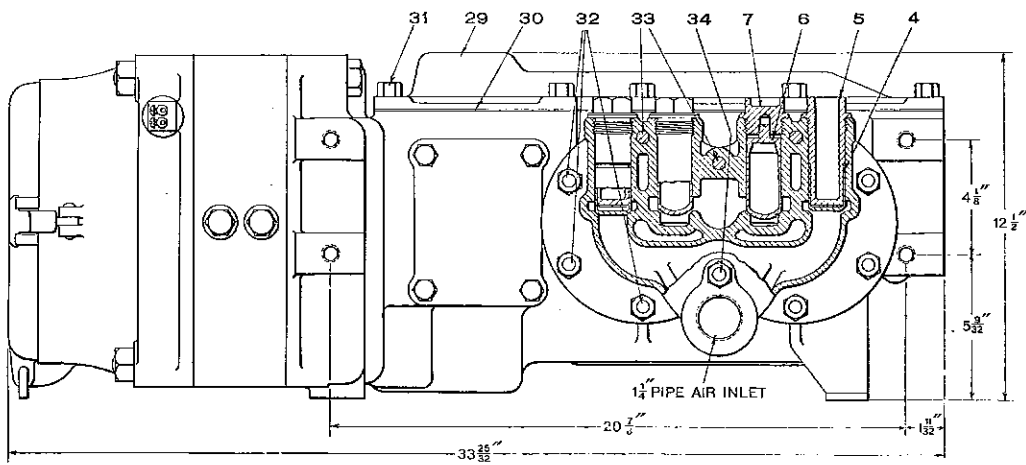
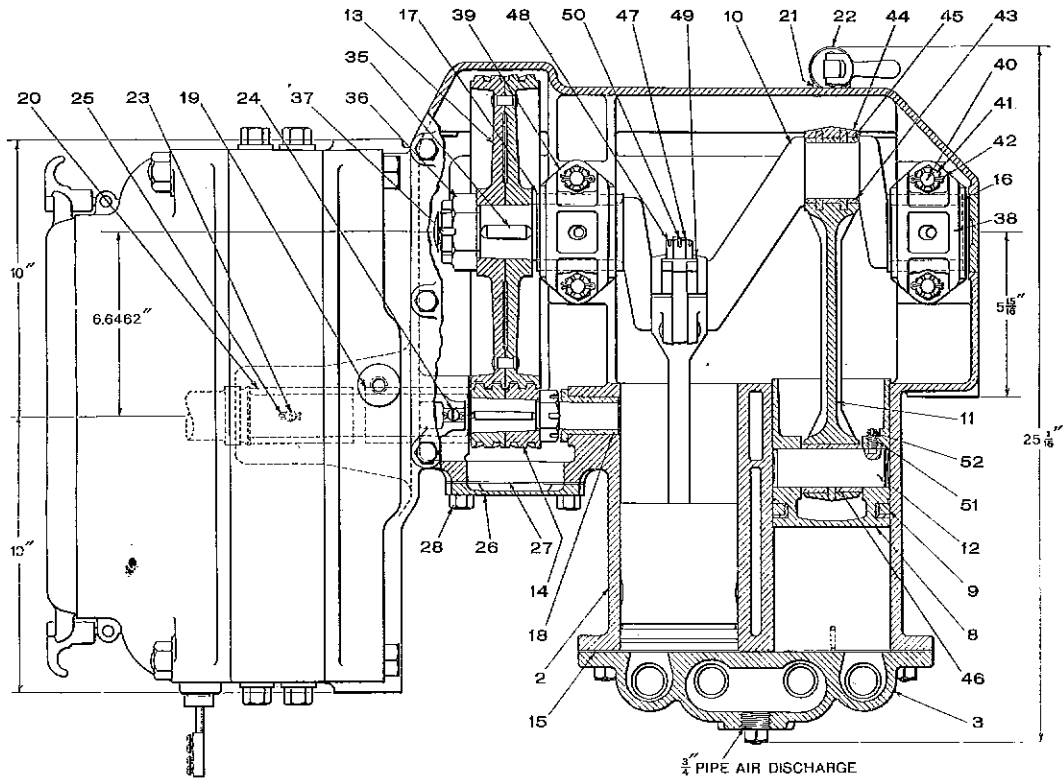
D=1=H Motor Driven Air Compressor.

Part Catalog No. T 3504=1.

Supplement No. 8.

January, 1916.

D-1-H MOTOR DRIVEN AIR COMPRESSOR.
(Compressor Portion only.)



Net Weight, 565 lbs.

D-1-H MOTOR DRIVEN AIR COMPRESSOR.

(Compressor Portion only.)

The D-1-H Motor Driven Air Compressor has a displacement of 16 cubic feet per minute when operating at the normal crank shaft speed of 217 revolutions per minute against 100 lbs. pressure and is equipped with motor designed for Direct Current at 600 volts.

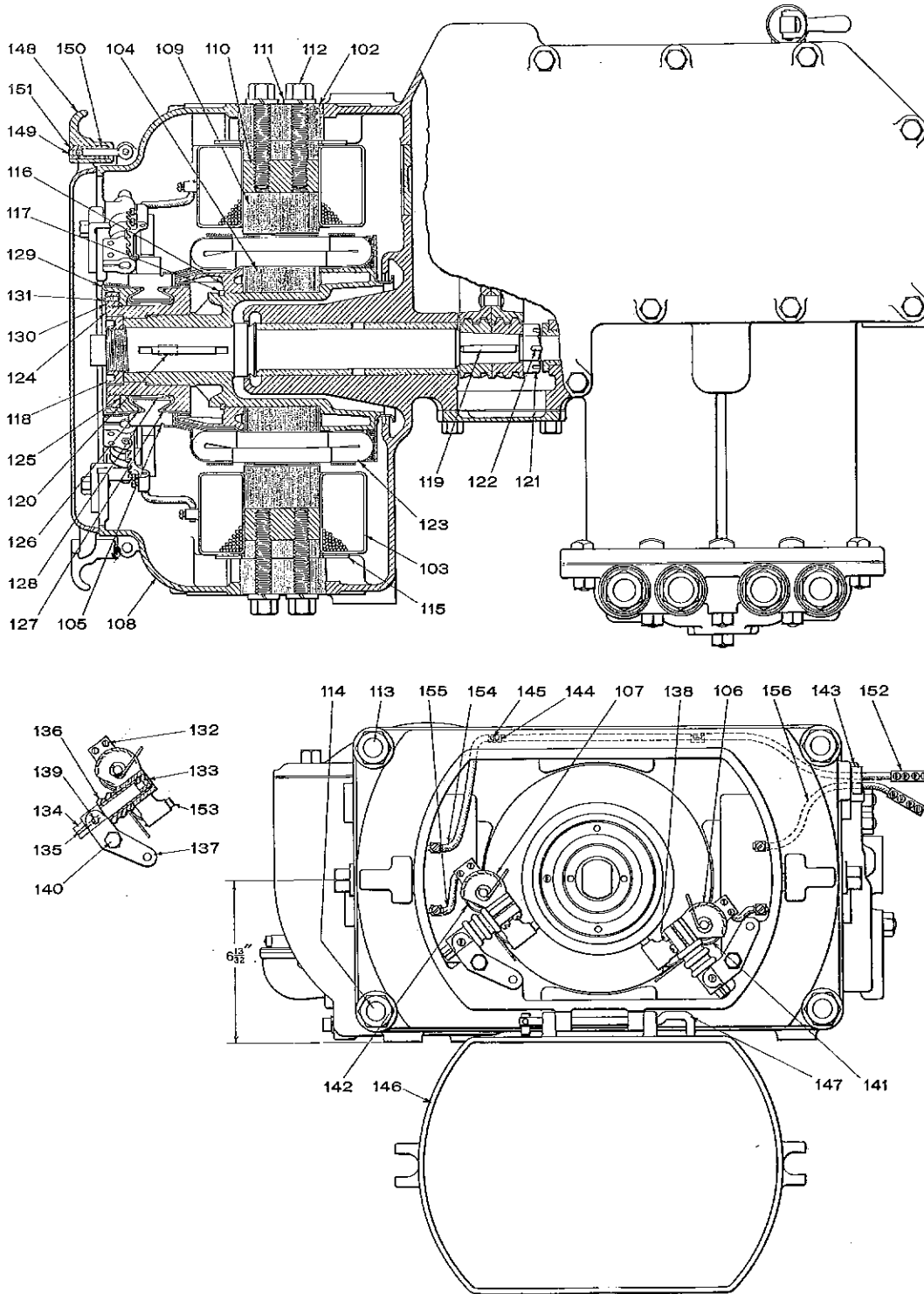
Piece No. 55130. D-1-H Motor Driven Air Compressor, complete, with
600-Volt Motor Price, \$260.00

Pc. No.	Ref. No.	Price	Pc. No.	Ref. No.	Price
56781	2	Cylinder and Crank Case, complete (includes 16, 17, 18, 19, 20, 21, 22, 23, 24, 26, 27, Pc. 1636, two of 25, Pc. 1734 and four of 28)	48301	28	Hand Hole Cover Cap Screw \$.03
		\$60.00	55182	29	Crank Case Top Cover 3.00
56782	3	Cylinder Cover, complete (includes two of 4, 5, 6 and 7)	55172	30	Crank Case Top Cover Gasket75
		14.25	48301	31	Crank Case Top Cover Cap Screw03
56761	3	Cylinder Cover, Finished Casting only	5198	32	½"x1½" Cylinder Cover Bolt and Nut03
		7.50	15949	33	½"x3" Cylinder Cover Bolt and Nut03
6923	4	Inlet Valve	15332	34	½"x4" Cylinder Cover Bolt and Nut05
		.60	55129	35	Crank Shaft Key05
44681	5	Inlet Valve Chamber Cap	44702	36	Crank Shaft Castle Nut60
		.60	16594	37	Cotter01
6823	6	Discharge Valve	55094	38	Bearing Cap (Rear End)25
		1.50	55371	39	Bearing Cap (Front End)25
44682	7	Discharge Valve Chamber Cap	55096	40	Bearing Cap Bolt05
		.40	55138	41	Castle Nut10
55221	8	Piston (includes 51 and 52)	2503	42	Cotter01
		2.00	55134	43	Connecting Rod Bush60
36441	9	Piston Ring	55133	44	Connecting Rod Cap 1.00
		2.00	55135	45	Connecting Rod Cap Bush60
55105	10	Crank Shaft	55132	46	Wrist Pin Bush 1.00
		7.50	55139	47	Eye Bolt, complete (includes 48, 49 and 50)30
55142	11	Connecting Rod, complete (includes 43, 44, 45, 46 and 47)	55138	48	Castle Nut10
		6.00	55137	49	Alignment Washer06
55089	12	Wrist Pin	2503	50	Cotter01
		.75	55144	51	Wrist Pin Set Screw10
55187	13	Gear	2958	52	Cotter01
		7.50	16645	*	G-5 Suction Strainer 1.75
55178	14	Pinion	1734		¾" Pipe Plug01
		3.50	1636		1" Pipe Plug02
55198	15	Cylinder Cover Gasket			
		.05			
55090	16	Rear Crank Shaft Bearing			
		2.75			
55091	17	Front Crank Shaft Bearing			
		2.75			
55148	18	Small Motor Bearing			
		1.25			
55146	19	Inside Motor Bearing			
		2.50			
55147	20	Outside Motor Bearing			
		2.50			
55704	21	Oil Filling Ell			
		.25			
55768	22	Oil Filling Plug, complete			
		.30			
55144	23	Outside Bearing Set Screw			
		.10			
55145	24	Inside Bearing Set Screw			
		.10			
2958	25	Cotter			
		.01			
55197	26	Hand Hole Cover			
		.25			
55164	27	Hand Hole Cover Gasket			
		.10			

*NOTE—For details of the G-5 Suction Strainer, see Page 7.

Orders must give SERIAL NUMBER of Compressor as well as PIECE NUMBER and NAME of part wanted.

D-1-H MOTOR DRIVEN AIR COMPRESSOR.
(Motor Portion only.)



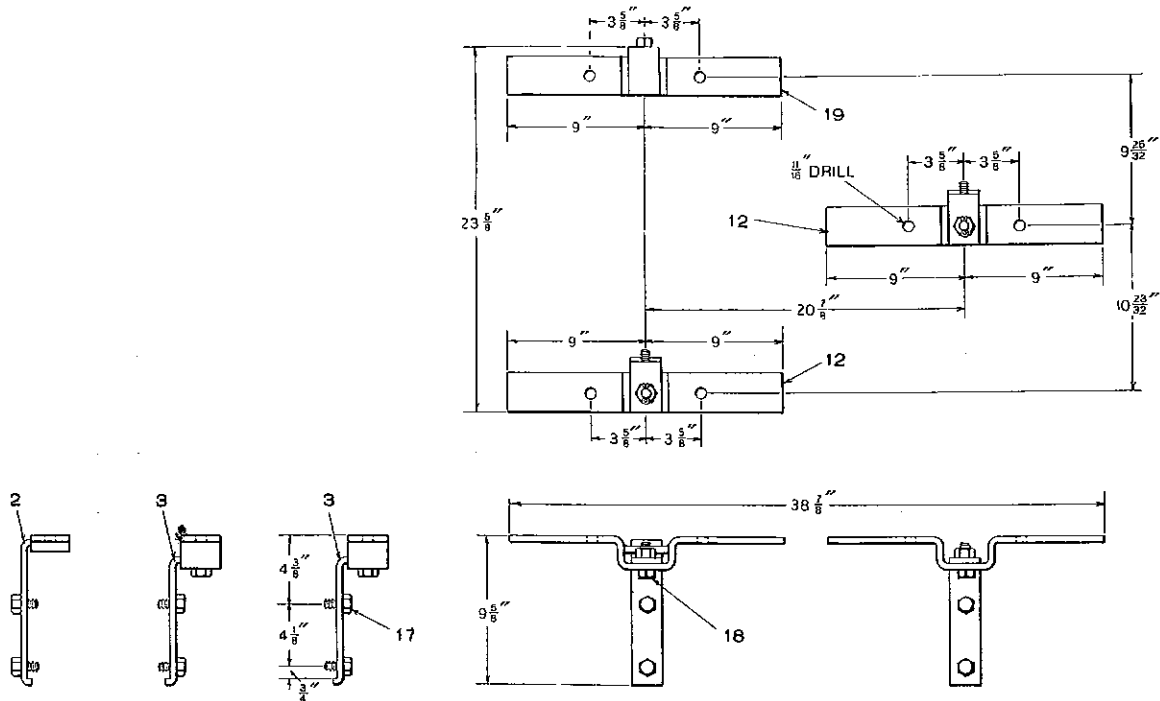
D-1-H MOTOR DRIVEN AIR COMPRESSOR.

(Motor Portion only.)

Pc. No.	Ref. No.		Price	Pc. No.	Ref. No.		Price
55226	102	Field Yoke, complete (includes two of 109, 110, four of 111 and 112)	\$17.50	55195	127	Rear V Ring	\$.75
55181	103	Field Coil	10.00	55196	128	Insulating Sleeve	.15
55230	104	Armature, complete (includes 105, 116, 117, 118, 119, 120, 121, 122 and forty-five of 123)	75.00	55192	129	Taper Ring	2.50
55241	105	Commutator, complete (includes 124, 125, 126, 127, 128, 129, 130 and 131)	20.00	55193	130	Commutator Nut	1.00
55222	106	Right Carbon Holder, complete (includes 133, 134, 135, 136, 137, 139, 140, 141 and two of 132 and 138)	3.00	15634	131	Commutator Nut Set Screw	.03
55223	107	Left Carbon Holder, complete (includes 133, 134, 135, 136, 137, 139, 140, 142 and two of 132 and 138)	3.00	55228		Commutator Segments and Strips (Set)	12.50
55224	108	Front End Bell, complete (includes 143, 146, and two of 144 and 145)	7.50	12555	132	Lead Screw	.01
55112	109	Salient Pole	2.00	51306	133	Carbon Holder Stud Insulation	.08
55111	110	Salient Pole Nut	.30	51319	134	Carbon Holder Stud	.20
15986	111	Lock Washer	.01	45759	135	Carbon Holder Stud Key	.02
10608	112	Salient Pole Cap Screw	.10	51305	136	Carbon Holder Stud Sleeve	.04
56019	113	Hexagon Head Bolt and Nut	.15	55246	137	Carbon Holder Clamp	.35
56021	114	Stud and Nut	.10	23020	138	Screw for securing Carbon Holder to Clamp	.01
55113	115	Field Coil Spring	.15	11775	139	Set Screw for securing Stud to Carbon Holder Clamp	.02
55097	116	Armature Collar	1.00	16239	140	Cap Screw for securing Carbon Holder Clamp	.05
56031	117	Ring for Armature Collar	.10	55126	141	Right Carbon Holder Spring	.50
55190	118	Armature Shaft Nut	.50	55128	142	Left Carbon Holder Spring	.50
55152	119	Key for Pinion	.03	55149	143	Insulating Plug	.15
55098	120	Key for Commutator	.02	5869	144	Cleat for Lead	.01
55163	121	Castle Nut	.25	12648	145	Cleat Screw	.01
17963	122	Cotter	.01	55225	146	Commutator Door, complete (includes 147 and 148)	2.25
55156	123	Armature Coil	.40	55653	147	Hinge Pin	.15
55191	124	Commutator Bushing	2.00	55121	148	Latch, complete (includes 149, 150 and 151)	.35
55975	125	Commutator Washer	.03	55120	149	Latch Eye Bolt	.15
55194	126	Front V Ring	.75	55119	150	Latch Spring	.05
				55118	151	Latch Nut	.04
				8026	152	Connector for Lead	.10
				55161	153	Carbon	.10
				56262	154	Field Coil Lead, 29" long	.12
				56261	155	Lead from Field Coil to Carbon Holder	.06
				56260	156	Field Coil Lead, 13" long	.06

Orders must give SERIAL NUMBER of Compressor as well as PIECE NUMBER and NAME of part wanted.

D-1-H MOTOR DRIVEN AIR COMPRESSOR.
SUSPENSION.



Net Weight, 23 1/2 lbs.

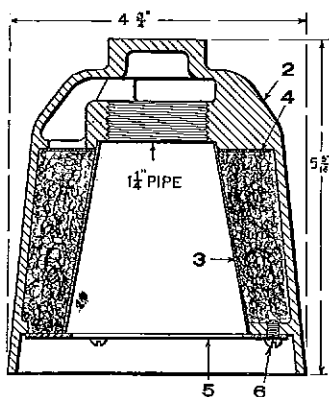
The Three Point Suspension illustrated above and listed below is standard and regularly supplied, unless otherwise specified, for use with the D-1-H Motor Driven Air Compressor at the additional price involved.

Pc. No.	Ref. No.	Description	Price
		Piece No. 55231. Three Point Suspension, complete	Price, \$2.50
55242	2	Hanger (Front)	\$.30
55243	3	Hanger (Front and Rear)	.30
55245	12	Bracket (Front and Rear)	.40
29154	17	5/8"x1 1/8" Cap Screw	.05
28978	18	Hexagon Bolt with Nut and Cotter	.06
55244	19	Bracket (Front)	.30

Orders must give PIECE NUMBER and NAME of part wanted.

D-1-F MOTOR DRIVEN AIR COMPRESSOR.
STRAINER.

Piece No. 16645. G-5 Suction Strainer, complete Price, \$1.75



Pc. No.	Ref. No.	Price
14955	2 Body	\$1.25
14957	3 Cone30
14958	4 Suction Plate10
14956	5 Cap Plate05
16644	6 Screw for securing Cap Plate02
	1/2 oz. Pulled Curled Hair, per lb.60

Net Weight, 4 1/2 lbs.

WRENCHES.

Wrenches are supplied only when specially ordered, and at the additional price involved as follows:

Piece No.	Price
37366 Wrench for Valve Chamber Caps	\$.08
55345 Wrench for Crank Shaft Bearing Cap Nuts60
55347 Wrench for Carbon Holder05
5199 Wrench for Connecting Rod, Cylinder Cover, Top Cover and Hand Hole Cover15
47201 Wrench for Oiling15

Orders must give PIECE NUMBER and NAME of part wanted.

Westinghouse Traction Brake Company,

Pittsburgh, Pa., U. S. A.

WORKS AT WILMERDING, PA.

OFFICES:

ATLANTA	-	-	-	-	-	-	-	-	-	-	-	-	-	-	Candler Building
BOSTON	-	-	-	-	-	-	-	-	-	-	-	-	-	-	Exchange Building
CHICAGO	-	-	-	-	-	-	-	-	-	-	-	-	-	-	Railway Exchange Building
COLUMBUS	-	-	-	-	-	-	-	-	-	-	-	-	-	-	Columbus Savings and Trust Building
DENVER	-	-	-	-	-	-	-	-	-	-	-	-	-	-	Tramway Building
HOUSTON, TEX.	-	-	-	-	-	-	-	-	-	-	-	-	-	-	4802 Main Street
LOS ANGELES	-	-	-	-	-	-	-	-	-	-	-	-	-	-	Pacific Electric Building
MEXICO CITY, MEXICO	-	-	-	-	-	-	-	-	-	-	-	-	-	-	4a Puente de Alvarado, No. 100
NEW YORK	-	-	-	-	-	-	-	-	-	-	-	-	-	-	City Investing Building
PITTSBURGH	-	-	-	-	-	-	-	-	-	-	-	-	-	-	Westinghouse Building
PORTLAND, ORE.	-	-	-	-	-	-	-	-	-	-	-	-	-	-	Spalding Building
ST. LOUIS	-	-	-	-	-	-	-	-	-	-	-	-	-	-	Security Building
ST. PAUL	-	-	-	-	-	-	-	-	-	-	-	-	-	-	Endicott Building
SALT LAKE CITY	-	-	-	-	-	-	-	-	-	-	-	-	-	-	McIntyre Building
SAN FRANCISCO	-	-	-	-	-	-	-	-	-	-	-	-	-	-	Pacific Building
TOPEKA	-	-	-	-	-	-	-	-	-	-	-	-	-	-	New England Building



ASSOCIATED COMPANIES:

THE AMERICAN BRAKE COMPANY,
St. Louis, Mo.
WESTINGHOUSE AIR BRAKE COMPANY,
Pittsburgh, Pa.
CANADIAN WESTINGHOUSE COMPANY, LTD.,
Hamilton, Ontario, Canada.
THE WESTINGHOUSE BRAKE COMPANY, LTD.,
London, Eng'and.
THE WESTINGHOUSE COMPANY, LTD.,
Petrograd, Russia.
WESTINGHOUSE BRAKE COMPANY OF
AUSTRALASIA, LTD.,
Concord West, New South Wales, Australia.

WESTINGHOUSE AUTOMATIC AIR AND STEAM
COUPLER COMPANY,
St. Louis, Mo.
WESTINGHOUSE PACIFIC COAST BRAKE
COMPANY,
Emeryville, Calif.
COMPAGNIE DES FREINS WESTINGHOUSE,
Sevran, France.
COMPAGNIA ITALIANA WESTINGHOUSE
DEI FRENI,
Turin, Italy.
WESTINGHOUSE EISENBAHN BREMSEN
GESELLSCHAFT,
Hanover, Germany.